

# Academic Excellence and Student Success

## Campus Partners

**Stephanie Sledge**  
Associate Athletic Director, Student-Athlete Academic Success



**Jordan Prantner**  
Associate Director, Student-Athlete Success

## Campus Partners



**John Kippes**  
Professional and Academic Support Specialist, Bright College



**Timm Pilcher**  
SJMC Student Professional & Academic Support Specialist



**Dr. Chrystal Stanley**  
Director, Career Services



**Annette Watson**  
Assistant Director, Career Services



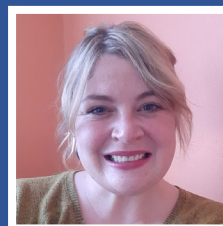
**Amanda Wroblewski**  
Assistant Director, Career Services



**Dr. Melissa Sturm-Smith**  
Associate Provost for Academic Excellence and Student Success



**Marina Verlengia**  
Director, New Student & Family Programs



**Dr. Mallery Allen**  
Director, Community Engaged Learning



**Amanda Martin**  
Assistant Director, Community Engaged Learning



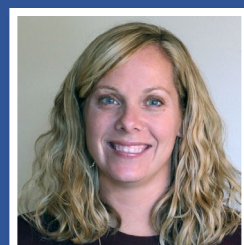
**Gina Ryan**  
Student Programs Operations Specialist



**Dr. Laura Shell**  
Strategic Director of Student Success and Retention



**Michelle Laughlin**  
Director, Access and Success



**Brooke Sanders**  
Coordinator, Access and Success