

Credit Hours Taught by Course Prefix

**Arts & Sciences**

		<b>2004-05</b>	<b>2005-06</b>	<b>2006-07</b>	<b>2007-08</b>	<b>2008-09</b>	<b>2009-10</b>
<b>ART</b>	<b>Annual</b>	<b>3388</b>	<b>3213</b>	<b>3454</b>	<b>2997</b>	<b>2852</b>	<b>2829</b>
	Summer	93	33	77	92	44	87
	Fall	1811	1696	1712	1583	1381	1334
	Spring	1484	1484	1665	1322	1427	1408
<b>MUS</b>	<b>Annual</b>	<b>3405</b>	<b>3506</b>	<b>3308</b>	<b>3894</b>	<b>3408</b>	<b>3603</b>
	Summer	4	3	7	9	0	2
	Fall	1758	1860	1666	1988	1828	1907
	Spring	1643	1643	1635	1897	1580	1694
<b>THEA</b>	<b>Annual</b>	<b>2023</b>	<b>1900</b>	<b>2049</b>	<b>2241</b>	<b>1800</b>	<b>1690</b>
	Summer	150	135	90	204	84	144
	Fall	992	884	1009	1058	963	821
	Spring	881	881	950	979	753	725
<b>Fine Arts</b>		<b>8,816</b>	<b>8,619</b>	<b>8,811</b>	<b>9,132</b>	<b>8,060</b>	<b>8,122</b>

<b>ENG</b>	<b>Annual</b>	<b>4429</b>	<b>4246</b>	<b>4421</b>	<b>4172</b>	<b>4528</b>	<b>4563</b>
	Summer	420	308	302	168	242	243
	Fall	1845	1759	1835	1701	1854	1858
	Spring	2164	2179	2284	2303	2432	2462
<b>HIST</b>	<b>Annual</b>	<b>4838</b>	<b>4466</b>	<b>4894</b>	<b>5301</b>	<b>4763</b>	<b>5342</b>
	Summer	431	471	521	478	474	486
	Fall	2182	1922	2114	2403	2377	2593
	Spring	2225	2073	2259	2420	1912	2263
<b>PHIL</b>	<b>Annual</b>	<b>1541</b>	<b>1522</b>	<b>1078</b>	<b>1009</b>	<b>958</b>	<b>816</b>
	Summer	0	1	31	9	5	6
	Fall	646	797	515	435	450	432
	Spring	895	724	532	565	503	378
<b>REL</b>	<b>Annual</b>	<b>1433</b>	<b>927</b>	<b>1346</b>	<b>966</b>	<b>933</b>	<b>601</b>
	Summer	21	1	1	0	3	1
	Fall	831	621	901	495	366	351
	Spring	581	305	444	471	564	249
<b>LPS</b>	<b>Annual</b>	<b>291</b>	<b>210</b>	<b>198</b>	<b>651</b>	<b>585</b>	<b>657</b>
	Summer	0	0	0	0	0	0
	Fall	177	123	135	276	297	324
	Spring	114	87	63	375	288	333
<b>DILS/LAP/WLC</b>		<b>708</b>	<b>669</b>	<b>786</b>	<b>831</b>	<b>659</b>	<b>974</b>
	Summer	0	0	0	0	21	3
	Fall	375	356	415	469	378	526
	Spring	333	313	371	362	260	445
<b>Humanities</b>		<b>13,240</b>	<b>12,040</b>	<b>12,723</b>	<b>12,930</b>	<b>12,426</b>	<b>12,953</b>

Credit Hours Taught by Course Prefix

		2004-05	2005-06	2006-07	2007-08	2008-09	2009-10
<b>ASTR</b>	<b>Annual</b>	<b>777</b>	<b>1093</b>	<b>1119</b>	<b>1424</b>	<b>1591</b>	<b>1454</b>
	Summer	0	0	0	0	0	0
	Fall	391	707	730	679	826	686
	Spring	386	386	389	745	765	768
<b>PHY/PHSC</b>		<b>914</b>	<b>1072</b>	<b>1025</b>	<b>909</b>	<b>936</b>	<b>963</b>
	Summer	124	169	224	0	168	140
	Fall	345	497	387	470	364	451
	Spring	445	406	414	439	404	372
<b>BCMB</b>		<b>175</b>	<b>268</b>	<b>324</b>	<b>292</b>	<b>205</b>	<b>188</b>
	Summer	1	0	0	1	0	0
	Fall	84	90	132	119	108	96
	Spring	90	178	192	172	97	92
<b>BIO</b>		<b>5384</b>	<b>5271</b>	<b>5796</b>	<b>6314</b>	<b>6634</b>	<b>5524</b>
	Summer	78	100	92	0	0	0
	Fall	2799	3179	3049	3469	3590	2744
	Spring	2507	1992	2655	2845	3044	2780
<b>CHEM</b>		<b>4073</b>	<b>4768.5</b>	<b>4958</b>	<b>5273</b>	<b>5297</b>	<b>5281</b>
	Summer	607	487	540	795	691	786
	Fall	2276	2281.5	2379	2485	2536	2524
	Spring	1190	2000	2039	1993	2070	1971
<b>ENSP</b>		<b>803</b>	<b>1311</b>	<b>714</b>	<b>1205</b>	<b>1364</b>	<b>1550</b>
	Summer	0	65	3	32	3	4
	Fall	414	597	332	828	579	971
	Spring	389	649	379	345	782	575
<b>PSY</b>		<b>4902</b>	<b>4913</b>	<b>4893</b>	<b>4856</b>	<b>4992</b>	<b>5106</b>
	Summer	190	246	178	174	158	81
	Fall	2332	2291	2229	2152	2328	2504
	Spring	2380	2376	2486	2530	2506	2521
<b>CS</b>		<b>609</b>	<b>561</b>	<b>720</b>	<b>639</b>	<b>1032</b>	<b>882</b>
	Summer	15	0	1	0	57	0
	Fall	320	209	424	303	509	414
	Spring	274	352	295	336	466	468
<b>MATH</b>		<b>4027</b>	<b>3856</b>	<b>3872</b>	<b>4321</b>	<b>4302</b>	<b>4009</b>
	Summer	65	132	117	139	79	65
	Fall	2224	2111	2072	2146	2430	2099
	Spring	1738	1613	1683	2036	1793	1845
<b>Natural/Phy Sci.</b>		<b>21,664</b>	<b>23,114</b>	<b>23,421</b>	<b>25,233</b>	<b>26,353</b>	<b>24,957</b>

Credit Hours Taught by Course Prefix

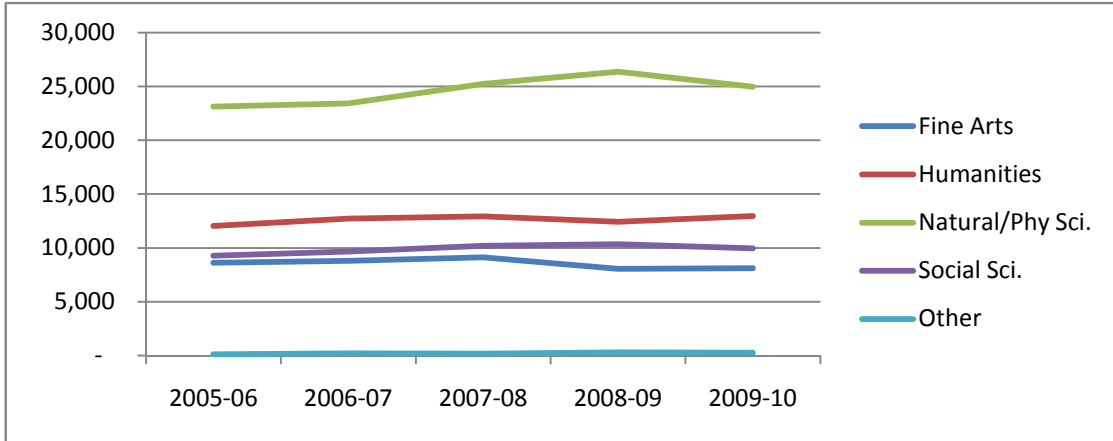
	2005-06	2006-07	2007-08	2008-09	2009-10
<b>POLS</b>	<b>3487</b>	<b>3533</b>	<b>3566</b>	<b>4116</b>	<b>4129</b>
<i>Summer</i>	259	183	271	267	261
<i>Fall</i>	1798	1781	1748	2062	1838
<i>Spring</i>	1430	1569	1547	1787	2030
<b>SCS</b>	<b>160</b>	<b>89</b>	<b>134</b>	<b>126</b>	<b>138</b>
<i>Summer</i>	0	0	25	0	0
<i>Fall</i>	66	15	66	52	36
<i>Spring</i>	94	74	43	74	102
<b>SCS-A</b>	<b>420</b>	<b>393</b>	<b>348</b>	<b>438</b>	<b>462</b>
<i>Summer</i>	0	0	0	0	0
<i>Fall</i>	213	186	177	168	216
<i>Spring</i>	207	207	171	270	246
<b>SCS-G</b>	<b>894</b>	<b>1176</b>	<b>1167</b>	<b>1230</b>	<b>1143</b>
<i>Summer</i>	69	33	57	81	72
<i>Fall</i>	405	531	660	660	639
<i>Spring</i>	420	612	450	489	432
<b>SCS-R</b>	<b>1047</b>	<b>1388</b>	<b>1602</b>	<b>1538</b>	<b>1359</b>
<i>Summer</i>	0	42	132	72	90
<i>Fall</i>	540	660	801	707	633
<i>Spring</i>	507	686	669	759	636
<b>SCS-S</b>	<b>2909</b>	<b>2826</b>	<b>3017</b>	<b>2794</b>	<b>2555</b>
<i>Summer</i>	108	24	66	63	99
<i>Fall</i>	1327	1407	1527	1368	1182
<i>Spring</i>	1474	1395	1424	1363	1274
<b>WS</b>	<b>375</b>	<b>252</b>	<b>357</b>	<b>117</b>	<b>168</b>
<i>Summer</i>	40	27	12	6	21
<i>Fall</i>	102	78	105	48	48
<i>Spring</i>	233	147	240	63	99
<b>Social Sci.</b>	<b>9,292</b>	<b>9,657</b>	<b>10,191</b>	<b>10,359</b>	<b>9,954</b>

<b>MILS</b>	<b>114</b>	<b>227</b>	<b>189</b>	<b>312</b>	<b>254</b>
<i>Summer</i>	21	0	0	0	0
<i>Fall</i>	50	48	83	125	135
<i>Spring</i>	43	179	106	187	119
<b>AIRS</b>	<b>4</b>	<b>0</b>	<b>0</b>	<b>0</b>	<b>14</b>
<i>Summer</i>	0	0	0	0	0
<i>Fall</i>	2	0	0	0	7
<i>Spring</i>	2	0	0	0	7
<b>Other</b>	<b>118</b>	<b>227</b>	<b>189</b>	<b>312</b>	<b>268</b>

Credit Hours Taught by Course Prefix

**Arts & Sciences Undergraduate Credit Hours by Division**

	2005-06	2006-07	2007-08	2008-09	2009-10
Fine Arts	8,619	8,811	9,132	8,060	8,122
Humanities	12,040	12,723	12,930	12,426	12,953
Nat/Phy Sci.	23,114	23,421	25,233	26,353	24,957
Social Sci.	9,292	9,657	10,191	10,353	9,954
Other	118	227	189	312	268



**FTE Taught Annually by Division (total credit hours taught by division divided by 15)**

	2005-06	2006-07	2007-08	2008-09	2009-10
<b>Fine Arts</b>	575	587	609	537	541
<b>Humanities</b>	803	848	862	828	864
<b>Natural Sci.</b>	1541	1561	1682	1757	1664
<b>Social Sci.</b>	619	644	679	691	664
<b>Other</b>	8	15	13	21	18
<b>Total</b>	3546	3656	3845	3834	3750

