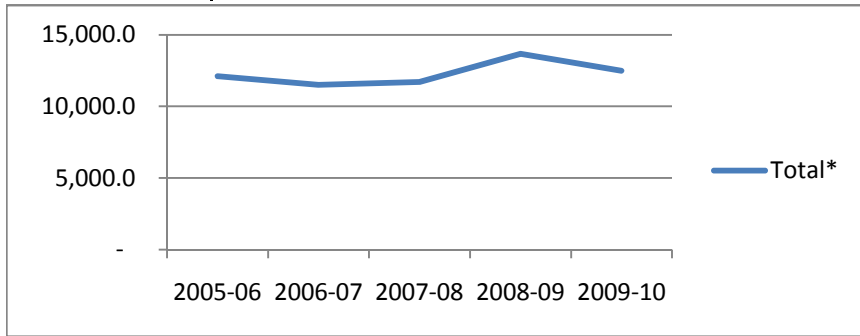


Student Credit Hours Taught by Course Prefix

**Pharmacy and Health Sciences**

	2005-06	2006-07	2007-08	2008-09	2009-10
<b>Total*</b>	<b>12,105.5</b>	<b>11,499.0</b>	<b>11,697.0</b>	<b>13,666.0</b>	<b>12,488</b>
Summer PHAR	77.5	106	121.5	70.5	81.5
Fall PHAR	5672	5427.5	5293	5249	6036
Fall HSCI	n/a	n/a	150	297.5	317.5
Spring PHAR	6356	5965.5	6095.5	7997	5731.5
Spring HSCI	n/a	n/a	37	52	321
<b>Rotations PHAR</b>	<b>2314</b>	<b>1028</b>	<b>978</b>	<b>5415</b>	<b>4120</b>

= still exploring reason for inconsistent data; excluded from totals



\* Total excludes Rotations hours

	2005-06	2006-07	2007-08	2008-09	2009-10
PHAR	807	767	767	888	790
HSCI	0	0	12	23	43
<b>Total</b>	<b>807</b>	<b>767</b>	<b>780</b>	<b>911</b>	<b>833</b>

