

Credit Hours Taught by Course Prefix

Arts & Sciences

| | | 2006-07 | 2007-08 | 2008-09 | 2009-10 | 2010-11 |
|------------------|---------------|----------------|----------------|----------------|----------------|----------------|
| ART | <i>Annual</i> | 3454 | 2997 | 2852 | 2829 | 2819 |
| | <i>Summer</i> | 77 | 92 | 44 | 87 | 56 |
| | <i>Fall</i> | 1712 | 1583 | 1381 | 1334 | 1386 |
| | <i>Spring</i> | 1665 | 1322 | 1427 | 1408 | 1377 |
| MUS | <i>Annual</i> | 3308 | 3894 | 3408 | 3603 | 3777 |
| | <i>Summer</i> | 7 | 9 | 0 | 2 | 6 |
| | <i>Fall</i> | 1666 | 1988 | 1828 | 1907 | 2119 |
| | <i>Spring</i> | 1635 | 1897 | 1580 | 1694 | 1652 |
| THEA | <i>Annual</i> | 2049 | 2241 | 1800 | 1690 | 1972 |
| | <i>Summer</i> | 90 | 204 | 84 | 144 | 165 |
| | <i>Fall</i> | 1009 | 1058 | 963 | 821 | 1065 |
| | <i>Spring</i> | 950 | 979 | 753 | 725 | 742 |
| Fine Arts | | 8,811 | 9,132 | 8,060 | 8,122 | 8,568 |

| | | | | | | |
|---------------------|---------------|---------------|---------------|---------------|---------------|---------------|
| ENG | <i>Annual</i> | 4421 | 4172 | 4528 | 4563 | 4446 |
| | <i>Summer</i> | 302 | 168 | 242 | 243 | 303 |
| | <i>Fall</i> | 1835 | 1701 | 1854 | 1858 | 1794 |
| | <i>Spring</i> | 2284 | 2303 | 2432 | 2462 | 2349 |
| HIST | <i>Annual</i> | 4894 | 5301 | 4763 | 5342 | 4950 |
| | <i>Summer</i> | 521 | 478 | 474 | 486 | 441 |
| | <i>Fall</i> | 2114 | 2403 | 2377 | 2593 | 2181 |
| | <i>Spring</i> | 2259 | 2420 | 1912 | 2263 | 2328 |
| PHIL | <i>Annual</i> | 1078 | 1009 | 958 | 816 | 1098 |
| | <i>Summer</i> | 31 | 9 | 5 | 6 | 81 |
| | <i>Fall</i> | 515 | 435 | 450 | 432 | 567 |
| | <i>Spring</i> | 532 | 565 | 503 | 378 | 450 |
| REL | <i>Annual</i> | 1346 | 966 | 933 | 601 | 726 |
| | <i>Summer</i> | 1 | 0 | 3 | 1 | 21 |
| | <i>Fall</i> | 901 | 495 | 366 | 351 | 300 |
| | <i>Spring</i> | 444 | 471 | 564 | 249 | 405 |
| LPS | <i>Annual</i> | 198 | 651 | 585 | 657 | 867 |
| | <i>Summer</i> | 0 | 0 | 0 | 0 | 57 |
| | <i>Fall</i> | 135 | 276 | 297 | 324 | 357 |
| | <i>Spring</i> | 63 | 375 | 288 | 333 | 453 |
| DILS/LAP/WLC | <i>Annual</i> | 786 | 831 | 659 | 974 | 1194 |
| | <i>Summer</i> | 0 | 0 | 21 | 3 | 36 |
| | <i>Fall</i> | 415 | 469 | 378 | 526 | 609 |
| | <i>Spring</i> | 371 | 362 | 260 | 445 | 549 |
| Humanities | | 12,723 | 12,930 | 12,426 | 12,953 | 13,281 |

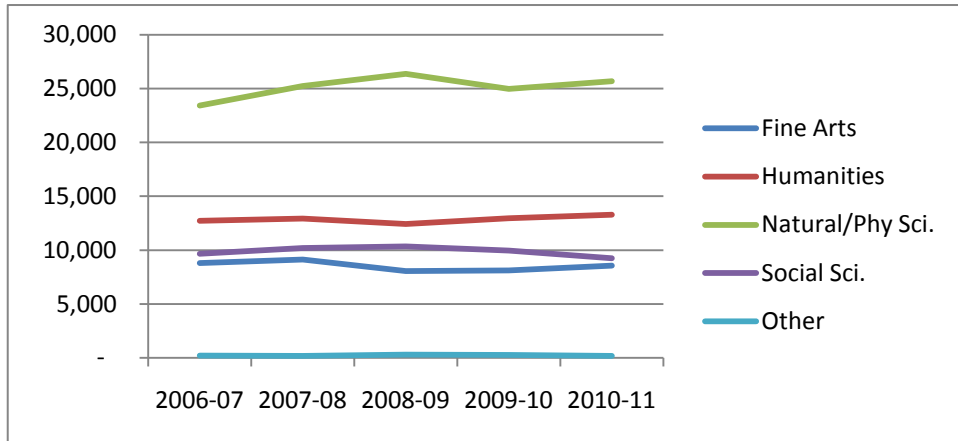
Credit Hours Taught by Course Prefix

| | | 2006-07 | 2007-08 | 2008-09 | 2009-10 | 2010-11 |
|-------------------------|---------------|---------------|---------------|---------------|---------------|---------------|
| ASTR | <i>Annual</i> | 1119 | 1424 | 1591 | 1454 | 1453 |
| | <i>Summer</i> | 0 | 0 | 0 | 0 | 0 |
| | <i>Fall</i> | 730 | 679 | 826 | 686 | 685 |
| | <i>Spring</i> | 389 | 745 | 765 | 768 | 768 |
| PHY/PHSC | | 1025 | 909 | 936 | 963 | 1068 |
| | <i>Summer</i> | 224 | 0 | 168 | 140 | 300 |
| | <i>Fall</i> | 387 | 470 | 364 | 451 | 398 |
| | <i>Spring</i> | 414 | 439 | 404 | 372 | 370 |
| BCMB | | 324 | 292 | 205 | 188 | 156 |
| | <i>Summer</i> | 0 | 1 | 0 | 0 | 0 |
| | <i>Fall</i> | 132 | 119 | 108 | 96 | 101 |
| | <i>Spring</i> | 192 | 172 | 97 | 92 | 55 |
| BIO | | 5796 | 6314 | 6634 | 5524 | 5857 |
| | <i>Summer</i> | 92 | 0 | 0 | 0 | 42 |
| | <i>Fall</i> | 3049 | 3469 | 3590 | 2744 | 2906 |
| | <i>Spring</i> | 2655 | 2845 | 3044 | 2780 | 2909 |
| CHEM | | 4958 | 5273 | 5297 | 5281 | 5334 |
| | <i>Summer</i> | 540 | 795 | 691 | 786 | 720 |
| | <i>Fall</i> | 2379 | 2485 | 2536 | 2524 | 2563 |
| | <i>Spring</i> | 2039 | 1993 | 2070 | 1971 | 2051 |
| ENSP | | 714 | 1205 | 1364 | 1550 | 1197 |
| | <i>Summer</i> | 3 | 32 | 3 | 4 | 2 |
| | <i>Fall</i> | 332 | 828 | 579 | 971 | 677 |
| | <i>Spring</i> | 379 | 345 | 782 | 575 | 518 |
| PSY | | 4893 | 4856 | 4992 | 5106 | 5132 |
| | <i>Summer</i> | 178 | 174 | 158 | 81 | 177 |
| | <i>Fall</i> | 2229 | 2152 | 2328 | 2504 | 2414 |
| | <i>Spring</i> | 2486 | 2530 | 2506 | 2521 | 2541 |
| CS | | 720 | 639 | 1032 | 882 | 1019 |
| | <i>Summer</i> | 1 | 0 | 57 | 0 | 2 |
| | <i>Fall</i> | 424 | 303 | 509 | 414 | 508 |
| | <i>Spring</i> | 295 | 336 | 466 | 468 | 509 |
| MATH | | 3872 | 4321 | 4302 | 4009 | 4464 |
| | <i>Summer</i> | 117 | 139 | 79 | 65 | 121 |
| | <i>Fall</i> | 2072 | 2146 | 2430 | 2099 | 2405 |
| | <i>Spring</i> | 1683 | 2036 | 1793 | 1845 | 1938 |
| Natural/Phy Sci. | | 23,421 | 25,233 | 26,353 | 24,957 | 25,680 |

Credit Hours Taught by Course Prefix

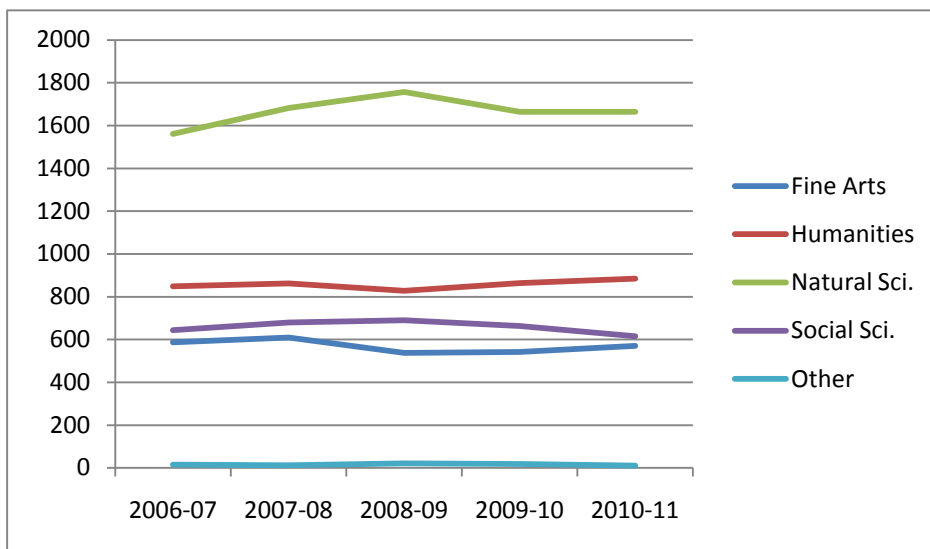
Arts & Sciences Undergraduate Credit Hours by Division

| | 2006-07 | 2007-08 | 2008-09 | 2009-10 | 2010-11 |
|--------------|---------|---------|---------|---------|---------|
| Fine Arts | 8,811 | 9,132 | 8,060 | 8,122 | 8,568 |
| Humanities | 12,723 | 12,930 | 12,426 | 12,953 | 13,281 |
| Nat/Phy Sci. | 23,421 | 25,233 | 26,353 | 24,957 | 25,680 |
| Social Sci. | 9,657 | 10,191 | 10,353 | 9,954 | 9,239 |
| Other | 227 | 189 | 312 | 268 | 174 |



FTE Taught Annually by Division (total credit hours taught by division divided by 12)

| | 2006-07 | 2007-08 | 2008-09 | 2009-10 | 2010-11 |
|---------------------|-------------|-------------|-------------|-------------|-------------|
| Fine Arts | 587 | 609 | 537 | 541 | 571 |
| Humanities | 848 | 862 | 828 | 864 | 885 |
| Natural Sci. | 1561 | 1682 | 1757 | 1664 | 1664 |
| Social Sci. | 644 | 679 | 691 | 664 | 616 |
| Other | 15 | 13 | 21 | 18 | 12 |
| Total | 3656 | 3845 | 3834 | 3750 | 3748 |



Credit Hours Taught by Course Prefix

| | 2006-07 | 2007-08 | 2008-09 | 2009-10 | 2010-11 |
|--------------------|--------------|---------------|---------------|--------------|--------------|
| POLS | 3533 | 3566 | 4116 | 4129 | 3816 |
| <i>Summer</i> | 183 | 271 | 267 | 261 | 288 |
| <i>Fall</i> | 1781 | 1748 | 2062 | 1838 | 1836 |
| <i>Spring</i> | 1569 | 1547 | 1787 | 2030 | 1692 |
| SCS | 89 | 134 | 126 | 138 | 126 |
| <i>Summer</i> | 0 | 25 | 0 | 0 | 0 |
| <i>Fall</i> | 15 | 66 | 52 | 36 | 75 |
| <i>Spring</i> | 74 | 43 | 74 | 102 | 51 |
| SCS-A | 393 | 348 | 438 | 462 | 444 |
| <i>Summer</i> | 0 | 0 | 0 | 0 | 0 |
| <i>Fall</i> | 186 | 177 | 168 | 216 | 234 |
| <i>Spring</i> | 207 | 171 | 270 | 246 | 210 |
| SCS-G | 1176 | 1167 | 1230 | 1143 | 1017 |
| <i>Summer</i> | 33 | 57 | 81 | 72 | 39 |
| <i>Fall</i> | 531 | 660 | 660 | 639 | 609 |
| <i>Spring</i> | 612 | 450 | 489 | 432 | 369 |
| SCS-R | 1388 | 1602 | 1538 | 1359 | 1170 |
| <i>Summer</i> | 42 | 132 | 72 | 90 | 69 |
| <i>Fall</i> | 660 | 801 | 707 | 633 | 482 |
| <i>Spring</i> | 686 | 669 | 759 | 636 | 619 |
| SCS-S | 2826 | 3017 | 2794 | 2555 | 2507 |
| <i>Summer</i> | 24 | 66 | 63 | 99 | 60 |
| <i>Fall</i> | 1407 | 1527 | 1368 | 1182 | 1106 |
| <i>Spring</i> | 1395 | 1424 | 1363 | 1274 | 1341 |
| WS | 252 | 357 | 117 | 168 | 159 |
| <i>Summer</i> | 27 | 12 | 6 | 21 | 12 |
| <i>Fall</i> | 78 | 105 | 48 | 48 | 48 |
| <i>Spring</i> | 147 | 240 | 63 | 99 | 99 |
| Social Sci. | 9,657 | 10,191 | 10,359 | 9,954 | 9,239 |

| | | | | | |
|---------------|------------|------------|------------|------------|------------|
| MILS | 227 | 189 | 312 | 254 | 154 |
| <i>Summer</i> | 0 | 0 | 0 | 0 | 0 |
| <i>Fall</i> | 48 | 83 | 125 | 135 | 77 |
| <i>Spring</i> | 179 | 106 | 187 | 119 | 77 |
| AIRS | 0 | 0 | 0 | 14 | 20 |
| <i>Summer</i> | 0 | 0 | 0 | 0 | 0 |
| <i>Fall</i> | 0 | 0 | 0 | 7 | 13 |
| <i>Spring</i> | 0 | 0 | 0 | 7 | 7 |
| Other | 227 | 189 | 312 | 268 | 174 |