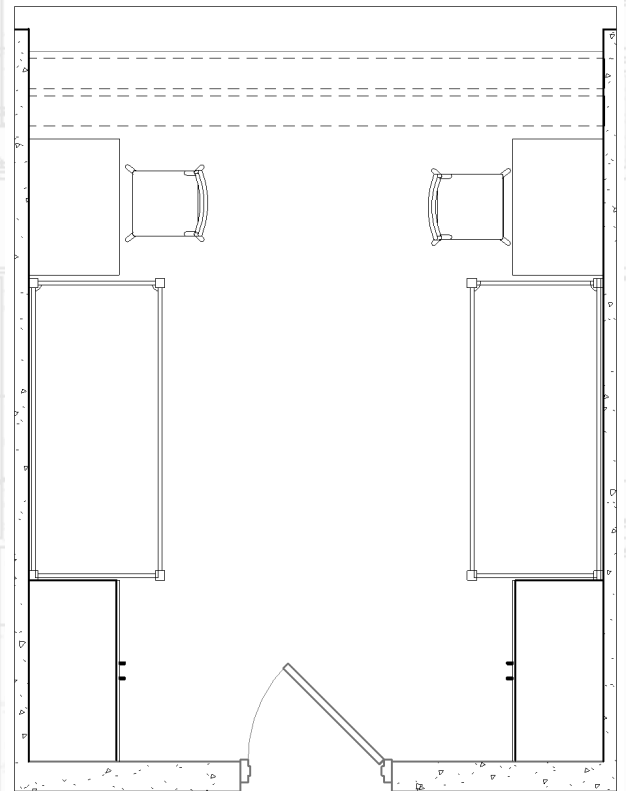
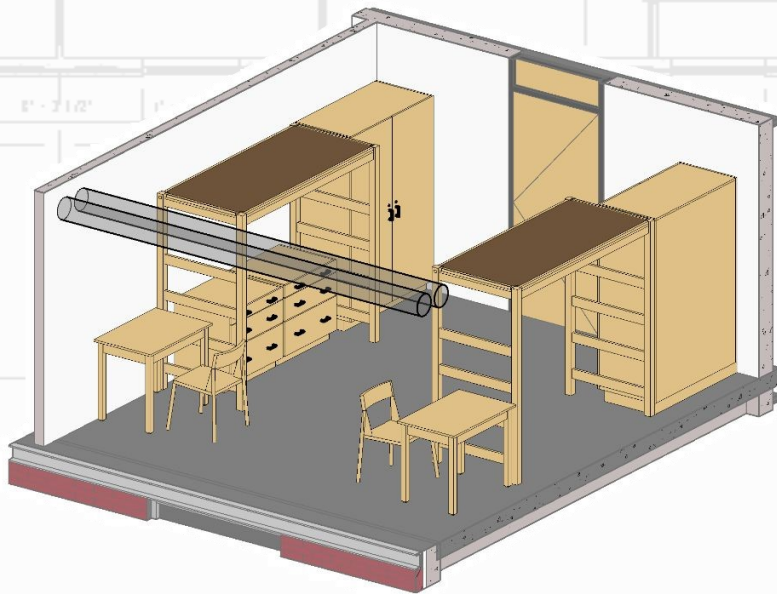


## WELCOME.

### To Your New Home

As a new student, we know you'll have plenty of stuff you'll want to bring in. To help get you started, here's a floor plan that most effectively uses the space, and one that suits our students best ■



*We've been working on improving our ventilation system and for optimal benefit, we recommend that you arrange the furniture in your room like we've shown above. However, if you choose to arrange your furniture differently, leave two to three inches of space from the exterior wall. Also, to ensure resident safety, placing lofted beds directly under the ventilation tubes is strictly prohibited.*